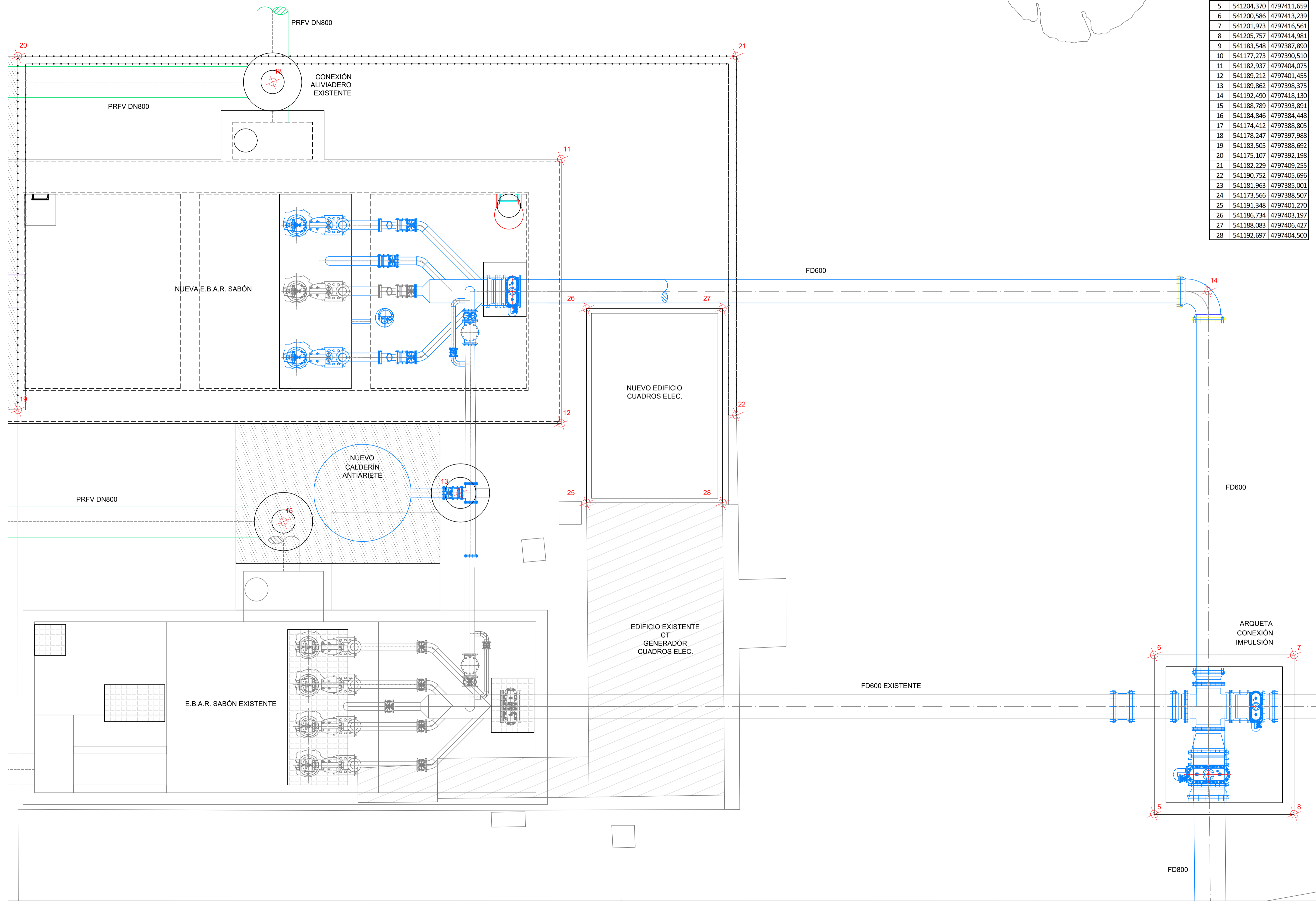
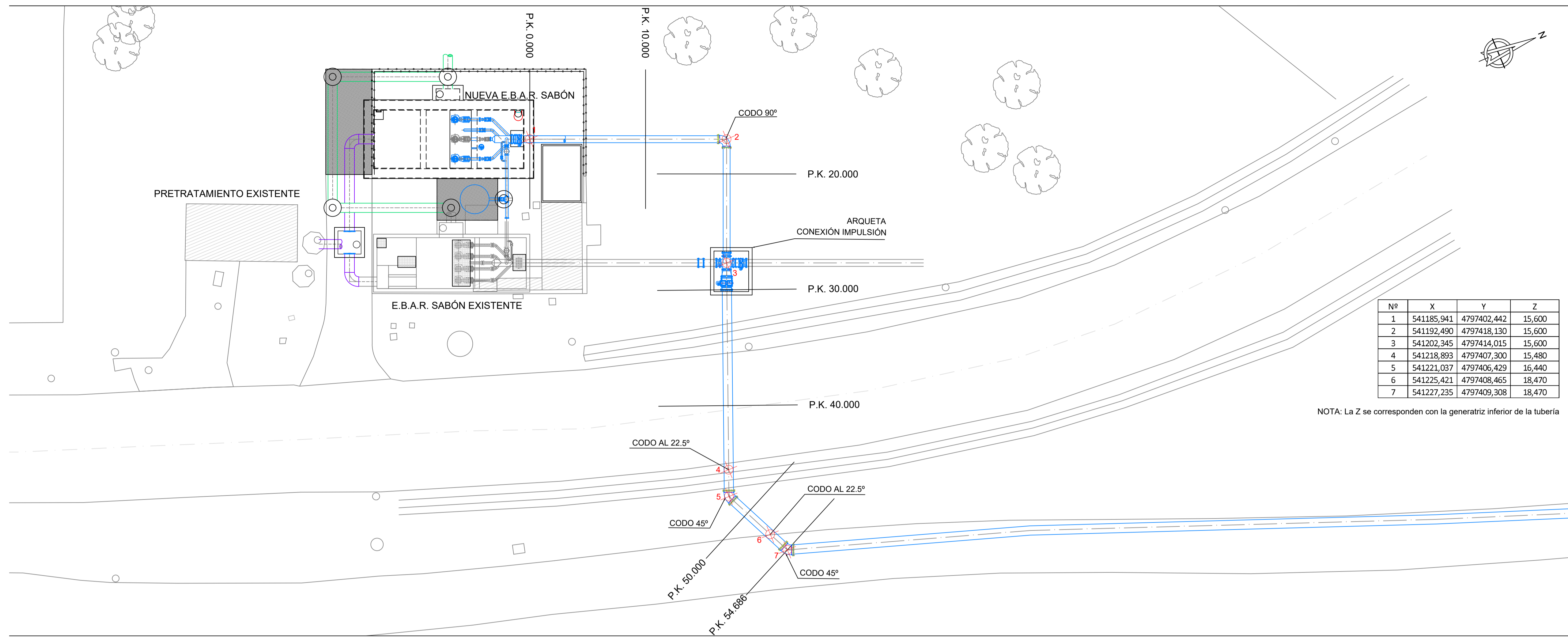


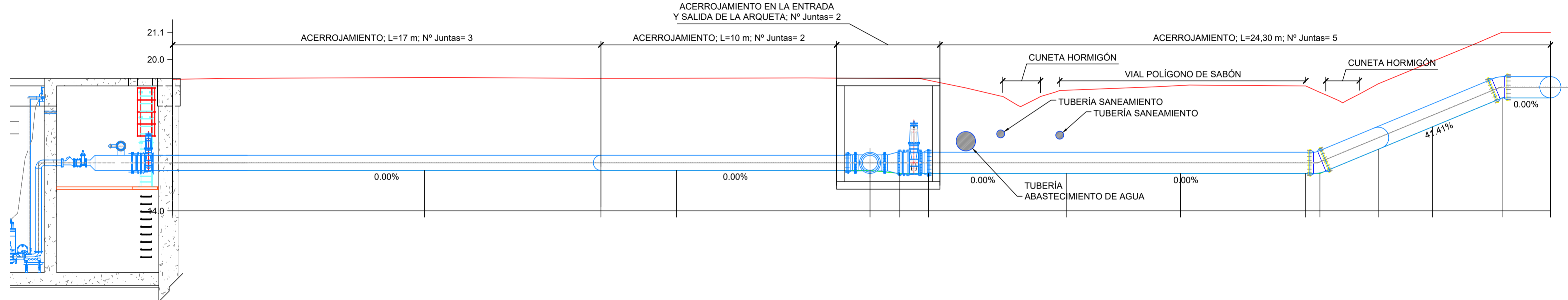
Nº	X	Y
1	541188,870	4797382,939
2	541186,470	4797383,940
3	541187,472	4797386,340
4	541189,871	4797385,338
5	541204,370	4797411,659
6	541200,586	4797413,239
7	541201,973	4797416,561
8	541205,757	4797414,981
9	541183,548	4797387,890
10	541177,273	4797390,510
11	541182,937	4797404,075
12	541189,212	4797401,455
13	541189,862	4797398,375
14	541192,490	4797418,130
15	541188,789	4797393,891
16	541184,846	4797384,448
17	541174,412	4797388,805
18	541178,247	4797397,988
19	541183,505	4797388,692
20	541175,107	4797392,198
21	541182,229	4797409,255
22	541190,752	4797405,696
23	541181,963	4797385,001
24	541173,566	4797388,507
25	541191,348	4797401,270
26	541186,734	4797403,197
27	541188,083	4797406,427
28	541192,697	4797404,500





Nº	X	Y	Z
1	541185,941	4797402,442	15,600
2	541192,490	4797418,130	15,600
3	541202,345	4797414,015	15,600
4	541218,893	4797407,300	15,480
5	541221,037	4797406,429	16,440
6	541225,421	4797408,465	18,470
7	541227,235	4797409,308	18,470

NOTA: La Z se corresponden con la generatriz inferior de la tubería



P.K.	0.0	10.00	17.00	20.00	27.68	28.86	30.00	35.47	40.00	44.98	45.54	47.85	50.00	52.77	54.69
CONDUCCIÓN	FD600								FD800						
SECCIÓN TIPO	S.T.12								S.T.10			S.T.12			
DISTANCIAS PARCIALES	0.00	10.00	7.00	3.00	7.68	1.18	1.14	5.47	4.53	4.98	0.56	2.31	2.15	2.77	1.92
COTAS DE RASANTE TUBO	15.60	15.60	15.60	15.60	15.60	15.48	15.48	15.48	15.48	15.48	15.48	16.44	17.33	18.47	18.47
COTAS DE TERRENO	19.21	19.28	19.25	19.26	19.25	19.25	19.17	18.78	18.97	18.95	18.69	19.03	19.92	21.07	21.07
FUNDIDAD RASANTE TUBO	-3.61	-3.68	-3.65	-3.66	-3.65	-3.77	-3.69	-3.30	-3.45	-3.47	-3.22	-2.59	-2.59	-2.60	-2.60
ARQUETA TIPO	NUEVA EBAR	CODO PL 90°		ARQUETA CONEXIÓN IMPULSIÓN DE SABÓN				CODO AL 22.5°		CODO PL 45°		CODO AL 22.5°		CODO PL 45°	